

KOLOHWE TIME



Grade Level 1-Sharing Aloha with our Ohana

Grade Level: 1st Grade

Duration: 60 minutes

Discovery Question: How can I show Aloha to my 'Ohana?

Learning Objectives:

By the end of this lesson, students will be able to define "ohana" and "aloha"; identify members of their own ohana, and demonstrate ways to share aloha with their family through creating a plumeria lei, making a card, and drawing their ohana.

Materials:

- Chart paper or whiteboard
- Markers
- Real or fake plumeria flowers (enough for each student)
- String or yarn
- Scissors
- Cardstock or construction paper
- Crayons, markers, or colored pencils
- Glue or tape
- Pictures of different types of Ohana
- My Ohana Worksheet
- Video-The Aloha Song
- https://www.youtube.com/watch?v=Nm2_0l_bAxI
- Video-Kolohe Time: The Island of No Aloha
- <https://www.youtube.com/watch?v=uJ2uCZvfP9U>



Introduction (I Do)

1. Begin the lesson by writing "Ohana" and "Aloha" on the chart paper or whiteboard.
2. Define Ohana. "Ohana means family in Hawaiian. It includes not just our immediate family, but also our extended family, friends, and people who are important to us."
3. Show pictures of different types of Ohana, such as nuclear families, single-parent families, multi-generational families, and families with close friends or neighbors. Discuss the differences and similarities between the pictures.
4. Define Aloha. "Aloha is a Hawaiian word that means love, affection, kindness, and caring. Sharing aloha with others is about showing them that we care and love them."
5. We will now listen to the Aloha Song and watch a video about Aloha. Show Aloha Video and Kolohe Time: The Island of NO Aloha Say: How did Aloha Meter show Aloha in the Video? Listen for their answers and help them if needed.



Guided Practice (We Do)

1. Brainstorming: Let's brainstorm some examples of how we can show to our ohana. Brainstorm means to think of ideas.
2. Give examples: Can you think of ways we can show Aloha to our Ohana? Some examples could be helping with chores, giving hugs, or sharing toys.
3. I'll write your ideas on the chart paper. (Write students' suggestions on the chart paper.)
4. Explain the activity: Today, we will be learning how to share aloha with our Ohana by creating a plumeria lei, making a card, and drawing our Ohana.

Activity 1: Making a Plumeria Lei (We Do & You Do)

1. Demonstrate how to make a plumeria lei using real or fake flowers and string. First, cut a piece of string or yarn long enough to make a necklace. Then, carefully thread the string through the center of each flower until you have enough flowers to make a lei.
2. Instruct the students to make their own plumeria lei for someone in their Ohana. Assist them as needed.
3. Once the leis are complete, ask the students to think about who they would like to give their lei to and why.



Optional Activity 2: Making a Card for a Family Member (You Do)

1. Instruct the students to fold a piece of cardstock or construction paper in half to create a card.
2. Encourage them to write a message inside the card, sharing their aloha with a family member.
3. Allow the students to decorate the card with crayons, markers, or colored pencils.

Optional Activity 3: Drawing Our Ohana (You Do)

1. Distribute the My Ohana sheet of paper to each student.
2. Instruct the students to draw a picture of their Ohana, including all the people who are important to them.
3. Encourage them to use crayons, markers, or colored pencils to color their drawing.

Closure

Have the students share their ohana pictures with the class and hang their pictures on the wall.



Additional Take Aways from this Lesson:

In conclusion, our Ohana and Aloha lesson plan has successfully immersed students in the rich Hawaiian culture, emphasizing the importance of family, love, and togetherness. Through various activities, students have gained a deeper appreciation for the values and traditions that define the Hawaiian way of life.

As we wrap up this lesson, let's reflect on the key takeaways:

1. Students have explored the meaning and significance of Ohana (family) and Aloha (love, affection, and compassion) in Hawaiian culture, and have discovered how these values play a vital role in shaping community relationships.
2. Through engaging stories, students have learned about the history and traditions of the Hawaiian people, which helps promote understanding and respect for diverse cultures.
3. The hands-on activities, such as creating a lei for their ohana, have allowed students to connect with the concept of Ohana on a personal level and appreciate the value of family bonds.
4. In practicing the spirit of Aloha, students have developed empathy, kindness, and compassion towards others, essential skills for fostering a positive and inclusive environment.

As we conclude this lesson, encourage students to carry the values of Ohana and Aloha with them beyond the classroom. By embracing the principles of love, compassion, and family, we can create a more harmonious and supportive community for everyone. Mahalo for participating in this enriching journey and may the spirit of Aloha be with you always.



Lesson Plan Alignment to Hawai'i Content and Performance Standards III:

The Hawaii Content and Performance Standards III (HCPS III) are the state's educational standards, which outline the knowledge and skills students should acquire at each grade level. To align the Ohana and Aloha lesson plan with HCPS-III standards, we can focus on the following subject areas and benchmarks:

1. Social Studies:

- *Benchmark SS.1.1.1 (Grade 1): Describe the historical and contemporary significance of the Hawaiian culture.*

By exploring Ohana and Aloha, students will gain a deeper understanding of the historical and contemporary significance of Hawaiian culture and the importance of cultural practices and institutions in Hawaii.

2. Language Arts:

- *Standard LA.1.6 (Grade 1): Comprehend and respond to a variety of texts that communicate information, ideas, and experiences.*

- *Benchmark LA.1.6.2 (Grade 1): Retell key details of a story or text.*

Through the use of stories and discussions, students will develop their ability to retell key details and demonstrate an understanding of the central message or lesson related to Ohana and Aloha.

3. Fine Arts:

- *Benchmark FA.1.1.1 (Grade 1): Use imagination, personal experiences, and heritage to create art.*

In participating in traditional Hawaiian crafts, students will create art using their imagination, personal experiences, and heritage, as well as learn about the community's ,rthese activitices and practices



4. Health:

Benchmark HE.1.2.2 (Grade 1): Describe ways to develop and maintain positive relationships.

As students practice the spirit of Aloha, they will develop and maintain positive relationships by displaying empathy, kindness, and compassion for themselves and others, essential skills for fostering a positive and inclusive environment.

By aligning the Ohana and Aloha lesson plan with these HCPS-III standards and benchmarks, students will not only gain a deeper appreciation for Hawaiian culture but also develop valuable skills across various subject areas.

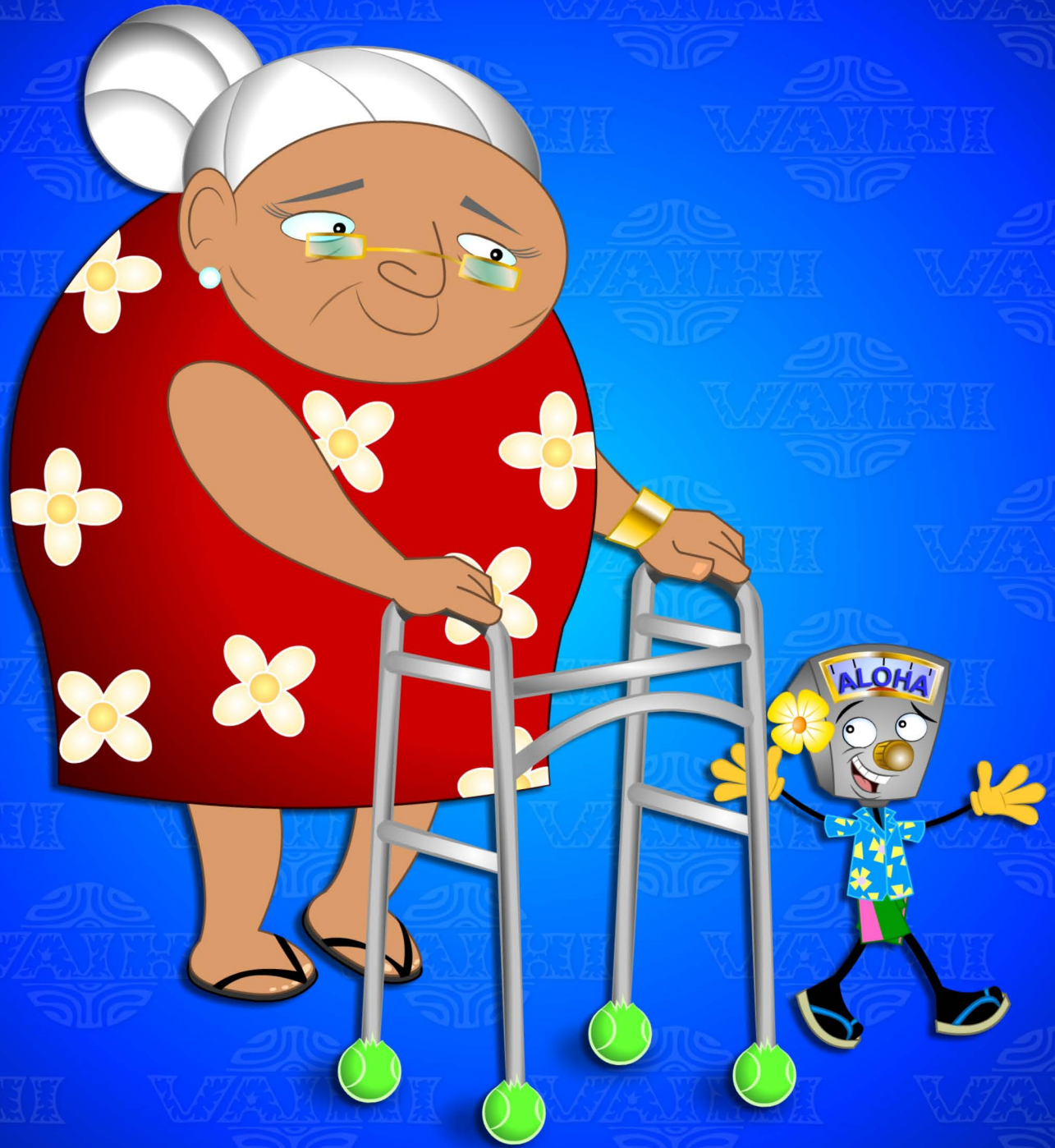


**KOLOHE
TIME**



ALOHA

**KOLOHE
TIME**



ALOHA

**KOLOHE
TIME**



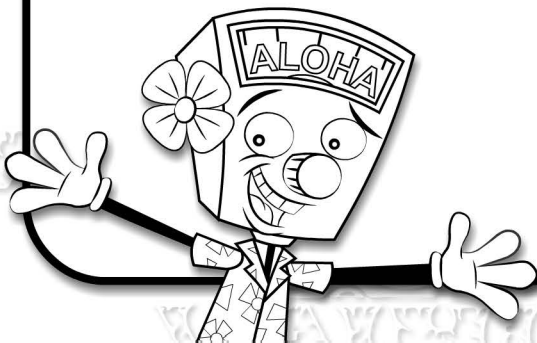
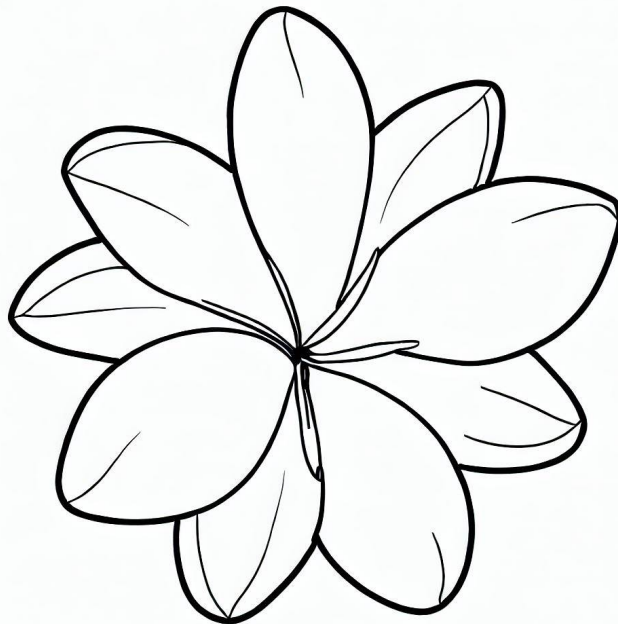
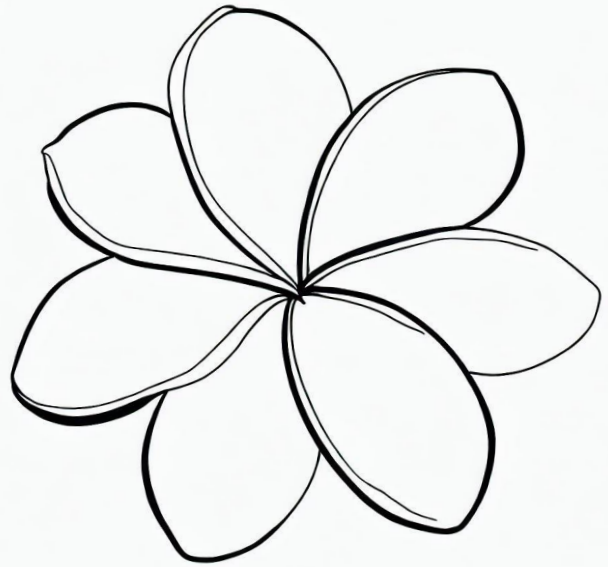
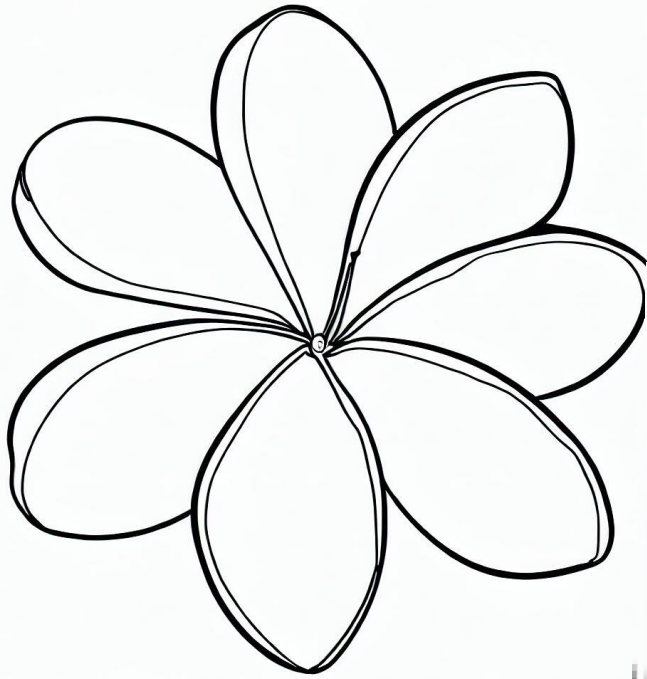
ALOHA

KOLOHE TIME

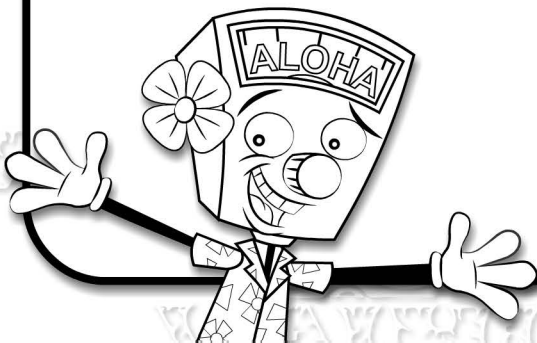


ALOHA

PLUMERIA FLOWERS



MY OHANA



VAIHI



[vaihi-no-ka-oi](#)



[vaihimusic1](#)



[vaihi.nokaoi](#)



[vaihi.nokaoi](#)



[vaihi music](#)

www.vaihi.com