

KOLOHWE TIME



Grade Level 2-Sharing Aloha with my Friends

Grade Level: 2nd Grade

Duration: 60 minutes

Discovery Question: How can I show Aloha to my Friends?

Standards: RL.2.1, RL.2.7, RI.2.1, SL.2.1, FA.DR.2.2.1

Learning Objectives:

By the end of this lesson, students will be able to define “aloha” and stronger “friendships”. Students will be able to demonstrate ways to share aloha with their friends through group discussion, reading and role playing scenarios.

Materials:

- Childrens book Island of No Aloha/ Aloha Is... Tammy Paikai

- Strengthening Sense of Aloha

<https://www.hawaiipublicschools.org/DOE%20Forms/NaHopenaAoE3.pdf>

- Video- The Aloha Song https://www.youtube.com/watch?v=Nm2_0l_bAxI

- Chart Paper

KWL Instructions (10 minutes):

Teacher will:

1. K (Know): Start by asking students what they already know about 'Aloha'. Record their responses on the board or chart paper, under the 'K' section.
2. W (Want to Know): Next, ask students what they would like to know about 'Aloha'. List these questions under the 'W' section.
3. L (Learn): Explain that after the lesson, we'll revisit this chart to see what we've learned about 'Aloha'.



Introduction (I Do)

1. Begin by asking students if they know what aloha means.
2. Explain that Aloha is a Hawaiian word that can mean many things, but it's often used to express love, kindness, and respect.
3. Tell students that today, they will learn more about Aloha and how they can show it to their friends.
4. Reading and discussion:
Read a children's book about Aloha such as:

"Island of No Aloha/Aloha Is..." by Tammy Paikai. Give a brief overview of the book without revealing too much.

5. Pause the reading at strategic points to discuss certain actions or events. Ask questions like, - - What does Aloha mean?

- - How can we show Aloha to our friends?
- -Why is it important to show Aloha to others?
- -Encourage the students to share their own ideas and experiences about Aloha.

6. After finishing the book, start a discussion about the characters. Ask how the characters showed 'Aloha' in the story.

Encourage students to think about how they can apply the 'Aloha' spirit in their lives, especially with their friends.



Guided Practice (We Do)

Na Hopena A'O Activity (20 minutes)

- Explain that Na Hopena A'O is a set of guidelines that help students develop important skills and character traits.
- Focus on the "Aloha" guideline and discuss what it means to show Aloha in different situations.
- Divide the students into small groups and give each group a scenario, such as:
 - Your friend is feeling sad because they didn't do well on a test. How can you show Aloha to them?
 - Your friend is new to the school and doesn't have anyone to play with at recess. How can you show Aloha to them?
 -
- Have each group come up with a skit or role-play to show how they would respond to the scenario while demonstrating Aloha.

(You Do)

1. Ask students to think about what they've learned about 'Aloha' and how they can show it to their friends.
2. Students share their thoughts, providing an opportunity for the teacher to assess their understanding.
3. Encourage students to practice showing 'Aloha' to their friends at school and at home.



Closure

1. Review: Briefly review what we've learned about 'Aloha' and how it strengthens friendships.
2. L (Learn): Return to the KWL chart and fill in the 'L' section with what the students have learned.
3. Closure: End the lesson with the Aloha song, reminding students to practice showing 'Aloha' to their friends and others.



Additional Take Aways from this Lesson:

In conclusion, our Ohana and Aloha lesson plan has successfully immersed students in the rich Hawaiian culture, emphasizing the importance of family, love, and togetherness. Through various activities, students have gained a deeper appreciation for the values and traditions that define the Hawaiian way of life.

As we wrap up this lesson, let's reflect on the key takeaways:

1. Students have explored the meaning and significance of Ohana (family) and Aloha (love, affection, and compassion) in Hawaiian culture, and have discovered how these values play a vital role in shaping community relationships.
2. Through engaging stories, students have learned about the history and traditions of the Hawaiian people, which helps promote understanding and respect for diverse cultures.
3. The hands-on activities, such as creating a lei for their ohana, have allowed students to connect with the concept of Ohana on a personal level and appreciate the value of family bonds.
4. In practicing the spirit of Aloha, students have developed empathy, kindness, and compassion towards others, essential skills for fostering a positive and inclusive environment.

As we conclude this lesson, encourage students to carry the values of Ohana and Aloha with them beyond the classroom. By embracing the principles of love, compassion, and family, we can create a more harmonious and supportive community for everyone. Mahalo for participating in this enriching journey and may the spirit of Aloha be with you always.



Lesson Plan Alignment to Hawai'i Content and Performance Standards III:

The Hawaii Content and Performance Standards III (HCPS III) are the state's educational standards, which outline the knowledge and skills students should acquire at each grade level. To align the Ohana and Aloha lesson plan with HCPS-III standards, we can focus on the following subject areas and benchmarks:

1. Social Studies:

- *Benchmark SS.1.1.1 (Grade 1): Describe the historical and contemporary significance of the Hawaiian culture.*

By exploring Ohana and Aloha, students will gain a deeper understanding of the historical and contemporary significance of Hawaiian culture and the importance of cultural practices and institutions in Hawaii.

2. Language Arts:

- *Standard LA.1.6 (Grade 1): Comprehend and respond to a variety of texts that communicate information, ideas, and experiences.*

- *Benchmark LA.1.6.2 (Grade 1): Retell key details of a story or text.*

Through the use of stories and discussions, students will develop their ability to retell key details and demonstrate an understanding of the central message or lesson related to Ohana and Aloha.

3. Fine Arts:

- *Benchmark FA.1.1.1 (Grade 1): Use imagination, personal experiences, and heritage to create art.*

In participating in traditional Hawaiian crafts, students will create art using their imagination, personal experiences, and heritage, as well as learn about the community's ,rthese activitices and practices



4. Health:

Benchmark HE.1.2.2 (Grade 1): Describe ways to develop and maintain positive relationships.

As students practice the spirit of Aloha, they will develop and maintain positive relationships by displaying empathy, kindness, and compassion for themselves and others, essential skills for fostering a positive and inclusive environment.

By aligning the Ohana and Aloha lesson plan with these HCPS-III standards and benchmarks, students will not only gain a deeper appreciation for Hawaiian culture but also develop valuable skills across various subject areas.

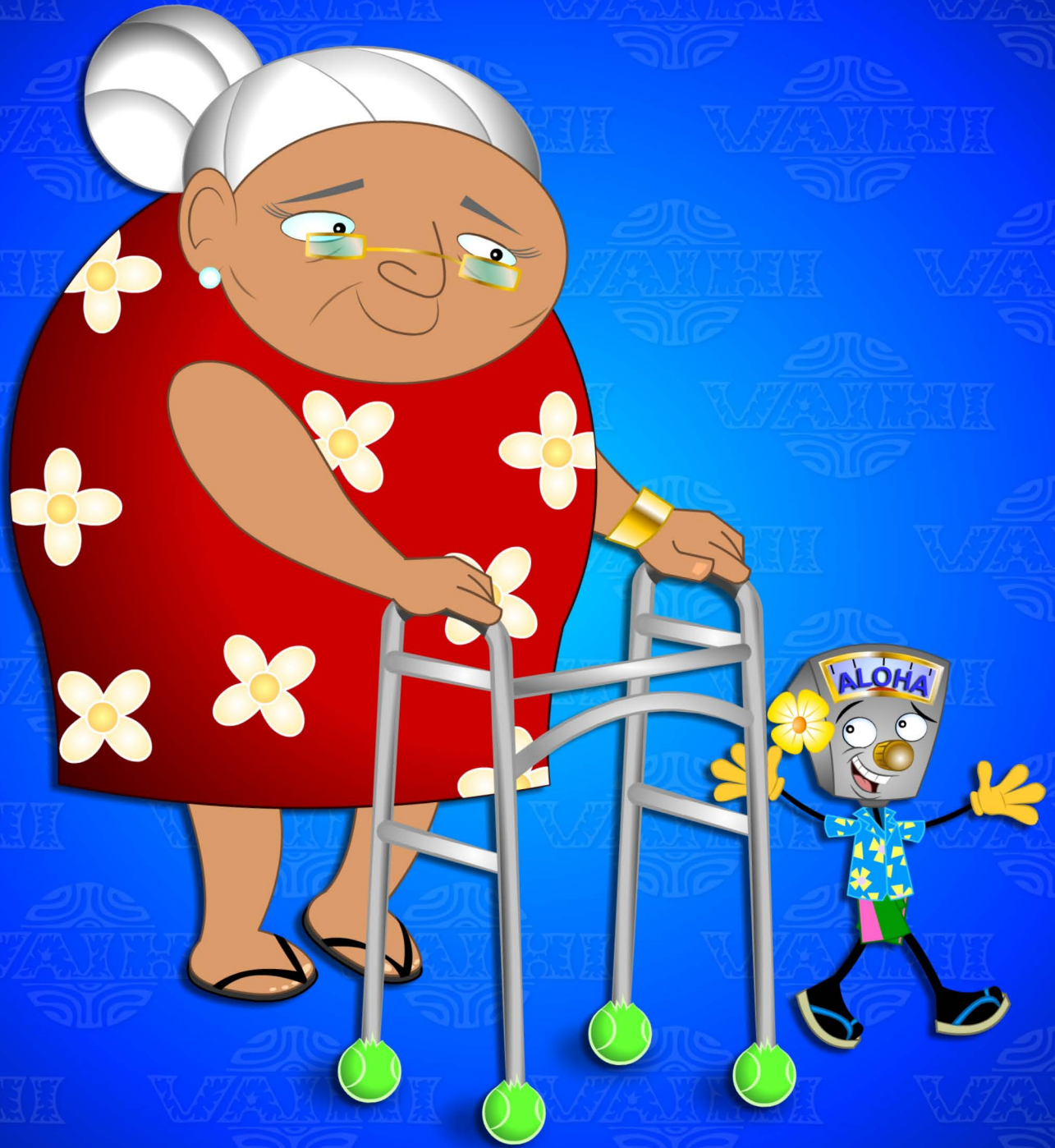


**KOLOHE
TIME**



ALOHA

**KOLOHE
TIME**



ALOHA

**KOLOHE
TIME**



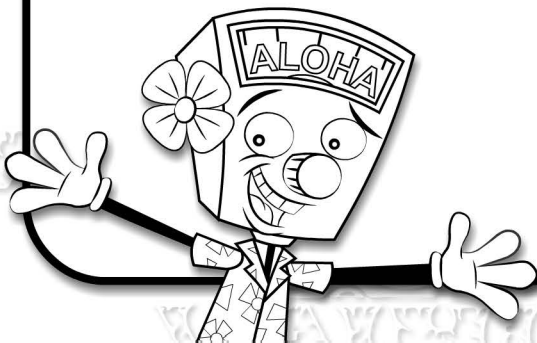
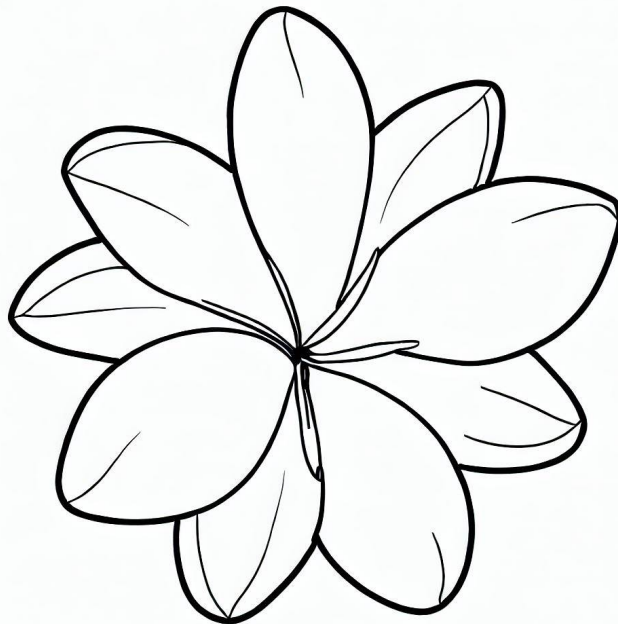
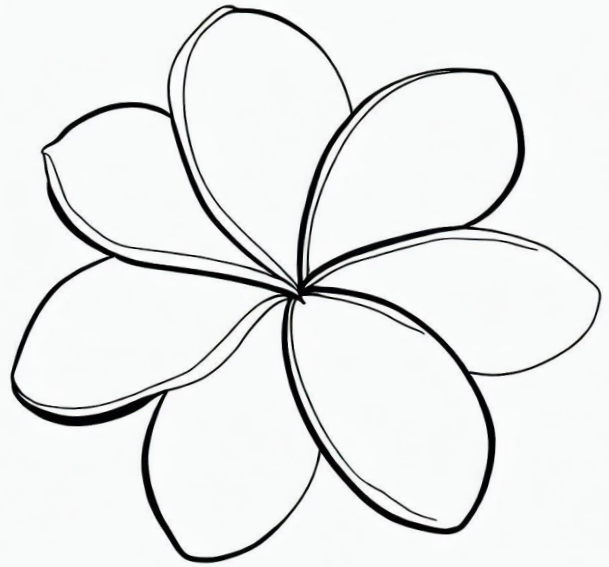
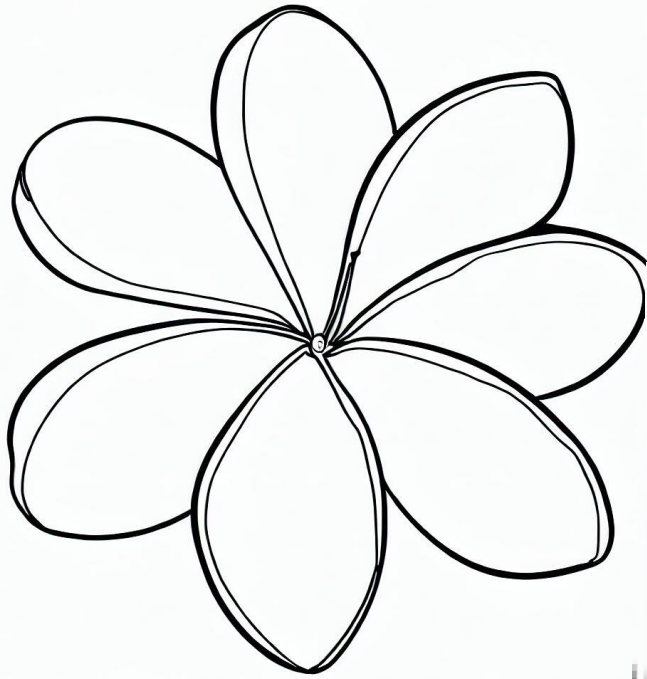
ALOHA

**KOLOHE
TIME**

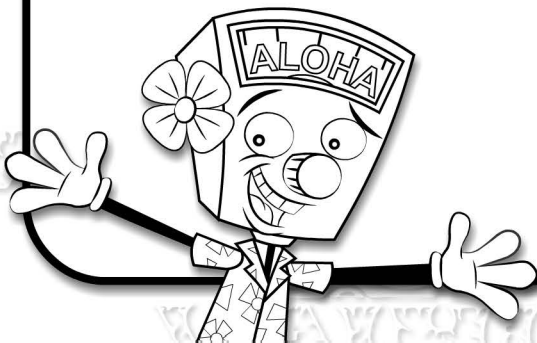


ALOHA

PLUMERIA FLOWERS



MY OHANA



VAIHI



vaihi-no-ka-oi



vaihimusic1



vaihi.nokaoi



vaihi.nokaoi



vaihi music

www.vaihi.com